

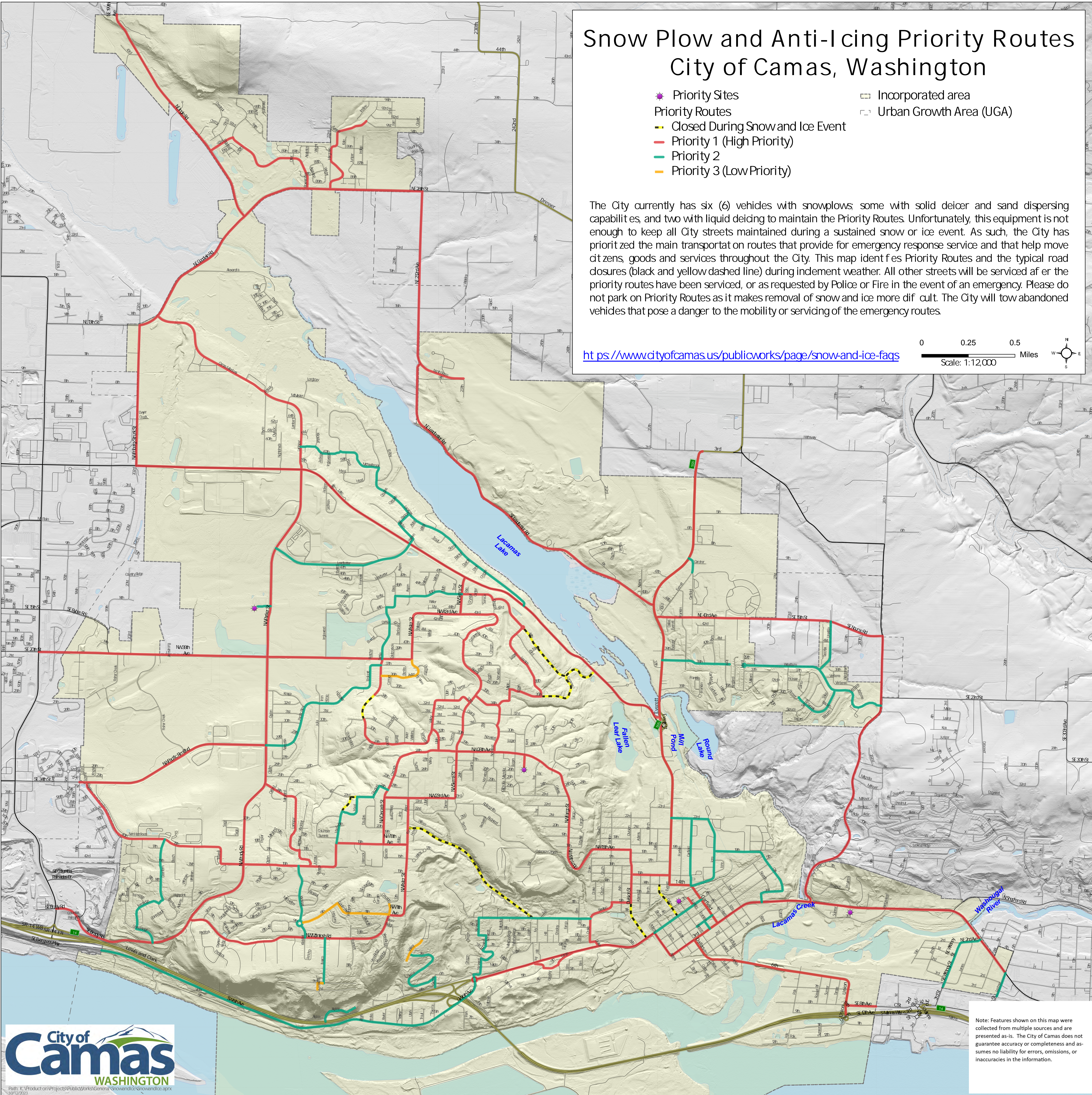
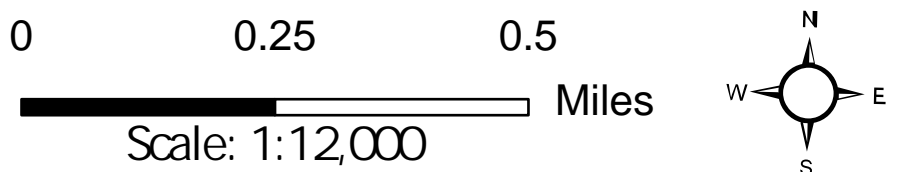
Snow Plow and Anti-Icing Priority Routes

City of Camas, Washington

- Priority Sites
- Priority Routes
 - Closed During Snow and Ice Event
 - Priority 1 (High Priority)
 - Priority 2
 - Priority 3 (Low Priority)
- Incorporated area
- Urban Growth Area (UGA)

The City currently has six (6) vehicles with snowplows; some with solid deicer and sand dispersing capabilities, and two with liquid deicing to maintain the Priority Routes. Unfortunately, this equipment is not enough to keep all City streets maintained during a sustained snow or ice event. As such, the City has prioritized the main transportation routes that provide for emergency response service and that help move citizens, goods and services throughout the City. This map identifies Priority Routes and the typical road closures (black and yellow dashed line) during inclement weather. All other streets will be serviced after the priority routes have been serviced, or as requested by Police or Fire in the event of an emergency. Please do not park on Priority Routes as it makes removal of snow and ice more difficult. The City will tow abandoned vehicles that pose a danger to the mobility or servicing of the emergency routes.

<https://www.cityofcamas.us/publicworks/page/snow-and-ice-facts>



Note: Features shown on this map were collected from multiple sources and are presented as-is. The City of Camas does not guarantee accuracy or completeness and assumes no liability for errors, omissions, or inaccuracies in the information.