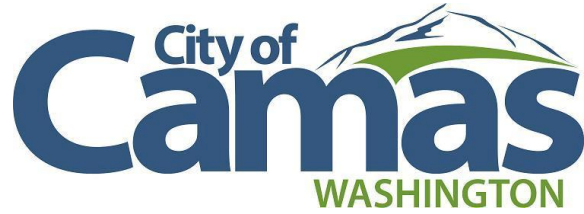




Street Lighting Standards



Street Lighting Collectors & Arterials (Cobra)

Luminaire - Autobahn Series ATBS P60 MVOLT R3 P7 PCL1

Light Pole - Valmont Structures 1MA0832S-320845906T4-SBF



Consistent with LEED® goals
& Green Globes™ criteria
for light pollution reduction



Autobahn Series ATBS

Roadway & Security Lighting

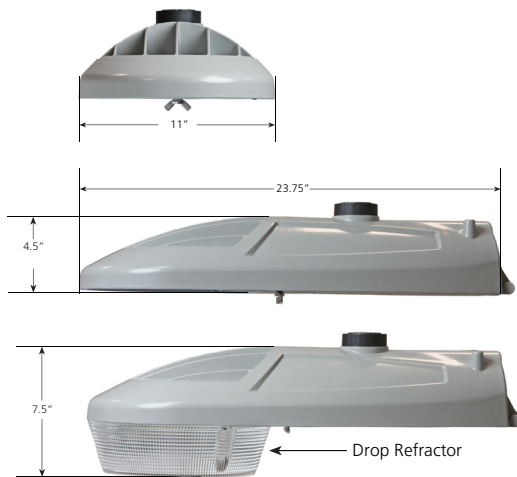
PRODUCT OVERVIEW



Applications:

Residential streets
Parking lots
General security lighting

DIMENSIONS



Effective Projected Area (EPA) The EPA for the ATBS is 0.3 sq. ft.,
Approx. Wt. = 12 lbs. (5 kg)

STANDARDS

DesignLights Consortium® (DLC) Premium qualified product. Not all versions of this product may be DLC Premium qualified. Please check the DLC Qualified Products List at www.designlights.org/QPL to confirm which versions are qualified.

Color temperatures of $\leq 3000\text{K}$ must be specified for International Dark-Sky Association certification.

Rated for -40°C to 40°C ambient

CSA Certified to U.S. and Canadian standards

Complies with ANSI: C136.2, C136.10, C136.14, C136.31, C136.15, C136.37

GOVERNMENT PROCUREMENT — BAA — Buy America(n) Act: Product with the BAA option qualifies as a domestic end product under the Buy American Act as implemented in the FAR and DFARS. Product with the BAA option also qualifies as manufactured in the United States under DOT Buy America regulations.

BABA — Build America Buy America: Product with the BAA option also qualifies as produced in the United States under the definitions of the Build America, Buy America Act.

Please refer to www.acuitybrands.com/buy-american for additional information.

Note: Actual performance may differ as a result of end-user environment and application. Specifications subject to change without notice.

Features:

OPTICAL

Same Light: Performance is comparable to 100W – 200W HPS and up to 175W Mercury Vapor roadway and security lighting luminaires.

White Light: Correlated color temperature - 4000K, 70 CRI minimum, 3000K, 70 CRI minimum or optional 5000K, 70 CRI minimum.

IP66 rated borosilicate glass optics ensure longevity and minimize dirt depreciation. Unique IP66 rated LED light engines provide 0% uplight and restrict backlight to within sidewalk depth, providing optimal application coverage and optimal pole spacing.

Available distributions are Type II, III, and V roadway distributions. When used with the optional acrylic refractor the unit provides approximately 10% uplight and increased vertical foot-candles

ELECTRICAL

Expected Life: LED light engines are rated $>100,000$ hours at 25°C , L70. Electronic driver has an expected life of 100,000 hours at a 25°C ambient.

Lower Energy: Saves an expected 40-60% over comparable HID luminaires.

Standard surge protection is 20kV/10kA "Extreme Level" per ANSI C136.2. An optional MOV pack provides 10kV/5kA "Enhanced Level".

Luminaire ships with a 0-10v dimmable driver. Luminaire is continuous and step dimming capable via AO option or controls installed on P7 photocontrol receptacle option.

MECHANICAL

Includes standard AEL lineman-friendly features such as tool-less entry, 3 station terminal block and quick disconnects. Bubble level located inside the electrical compartment for easy leveling at installation.

Rugged die-cast aluminum housing and door are polyester powder-coated for durability and corrosion resistance. Rigorous five-stage pre-treating and painting process yields a finish that achieves a scribe creepage rating of 8 (per ASTM D1654) after over 5000 hours exposure to salt fog chamber (operated per ASTM B117).

Mast arm mount is adjustable for arms from 1-1/4" to 2" (1-5/8" to 2-3/8" O.D.) diameter. The 2 – bolt clamping mechanism provides 3G vibration rating per ANSI C136.31.

The Wildlife shield is cast into the housing (not a separate piece).

CONTROLS

NEMA 3 pin photocontrol receptacle is standard, with the Acuity designed ANSI standard 7 pin receptacles optionally available.

Premium solid state locking-style photocontrol – PCSS (10 year rated life) Extreme long life solid state locking-style photocontrol – PCL1 (20 year rated life)

Optional onboard Adjustable Output module allows the light output and input wattage to be modified to meet site specific requirements, and also can allow a single fixture to be flexibly applied in many different applications.

Autobahn Series ATBS

Roadway & Security Lighting

ORDERING INFORMATION

Series	Performance Packages	Voltage	Optics
ATBS Autobahn LED Roadway & Security	P10 5,500 lumens P20 6,800 lumens P30 8,300 lumens P40 9,400 lumens P50 10,800 lumens P60⁴ 11,850 lumens	MVOLT Multi-volt, 120-277V 347 347V 480 480V	R2 Roadway Type II R3 Roadway Type III R5 Roadway Type V D3 Type III, Drop Refractor included D5 Type V, Drop Refractor included
Options			
<u>Color Temperature (CCT)</u> (Blank) 4000K CCT, 70 CRI Min. 27K² 2700K CCT, 70 CRI Min. 3K 3000K CCT, 70 CRI Min. 5K 5000K CCT, 70 CRI Min.	<u>Controls</u> (Blank) 3 Pin NEMA Photocontrol Receptacle NR¹ No Photocontrol Receptacle P7 7 Pin Photocontrol Receptacle (dimmable driver included) PCSS^{1,4} DTL DSS Photocontrol PCL1¹ DTL DLL Photocontrol 120-277V AO Field Adjustable Output SH Shorting Cap	<u>Accessories</u> ATBSREF Drop Refractor for field installation ATBSHSS House Side Shield for field installation ATBSLTS Light Trespass Shield for field installation ATBS LOUVER KIT Louver Kit for field installation ATBSVR-XX Visual Comfort Refractor and painted skirt for field installation	
<u>Paint</u> Blank Gray (Standard) BK Black WH White BZ Bronze	<u>Packages</u> (Blank) Standard Pack JP Job Pack (54/pallet)	<u>Universal Arms (steel)</u> UMR XX 8" Horizontal Arm for Round Pole, Painted to match Fixture (XX - Paint Color) UMS XX 8" Horizontal Arm for Square Pole, Painted to match Fixture (XX - Paint Color) UMR GALV 8" Horizontal Arm for Round Pole, Galvanized UMS GALV 8" Horizontal Arm for Square Pole, Galvanized	
<u>Surge Protection</u> Blank Standard 20kV/10kA SPD MP MOV Pack 10kV/5kA	<u>Install Packages</u> PKGS DTL DSS Photocontrol PKGL DTL DLL Photocontrol Packages ship with selected photocontrol, 24", 1 1/4" diameter arm, 5' of prewire and mounting hardware		
<u>Misc.</u> HS House Side Shield NL NEMA Label XL Not CSA Certified VR³ Visual Comfort Optic BAA Buy America(n) Act and/or Build America Buy America Qualified			

Notes

- Not available with Install Packages.
- Requires RFD.
- Not available with D3 or D5 option.
- Not available with 347V and 480V supply voltage options.



AEL Headquarters, One Lithonia Way, Conyers Georgia 30012
 www.americanelectriclighting.com Phone: 1-866-HOLOPHANE
 Email: TechSupport-Lighting@AcuityBrands.com

© 2014-2024 Acuity Brands Lighting, Inc. All Rights Reserved. Rev. 09/19/24 ATBS

Warranty Five-year limited warranty. This is the only warranty provided and no other statements in this specification sheet create any warranty of any kind. All other express and implied warranties are disclaimed. Complete warranty terms located at: www.acuitybrands.com/support/warranty/terms-and-conditions

Note: Actual performance may differ as a result of end-user environment and application. All values are design or typical values, measured under laboratory conditions at 25 °C. Specifications subject to change without notice.

Please contact your sales representative for the latest product information.

Autobahn Series ATBS

Roadway & Security Lighting

PERFORMANCE PACKAGE

ATBS

Performance Package	Distribution	Input Watts	3K (3000K CCT, 70 CRI)					4K/5K (4000K/5000K CCT, 70 CRI)					LLD @ 25°C		
			Lumens	LPW	B	U	G	Lumens	LPW	B	U	G	50k Hours	75k Hours	100k Hours
P10	R2	40	5,360	134	1	0	2	5,577	139	1	0	2	0.92	0.89	0.85
	R3		5,287	132	1	0	1	5,524	138	1	0	1			
	R5		5,576	139	3	0	1	5,758	144	3	0	1			
	D3		4,963	124	1	3	3	5,163	129	1	3	3			
	D5		5,372	134	2	3	3	5,590	140	2	3	3			
P20	R2	50	6,707	134	1	0	2	6,809	136	1	0	2	0.92	0.89	0.85
	R3		6,687	134	2	0	2	6,760	135	2	0	2			
	R5		6,926	139	3	0	1	7,108	142	3	0	1			
	D3		6,496	130	2	3	4	6,244	125	1	3	4			
	D5		7,032	141	3	4	4	7,317	146	3	4	4			
P30	R2	60	8,092	135	2	0	2	8,067	134	1	0	1	0.92	0.89	0.85
	R3		7,971	133	2	0	2	8,328	139	2	0	2			
	R5		8,470	141	3	0	2	8,760	146	3	0	2			
	D3		7,491	125	2	3	4	7,795	130	2	3	4			
	D5		8,110	135	3	4	4	8,438	141	3	4	4			
P40	R2	70	9,138	131	2	0	2	9,533	136	2	0	2	0.92	0.89	0.85
	R3		9,136	131	2	0	2	9,355	134	2	0	2			
	R5		9,868	141	3	0	2	9,710	139	3	0	2			
	D3		8,460	121	2	3	4	8,802	126	2	3	5			
	D5		9,158	131	3	4	5	9,529	136	3	4	5			
P50	R2	82	10,628	130	2	0	3	10,829	132	2	0	3	0.92	0.89	0.85
	R3		10,624	130	2	0	2	10,826	132	2	0	2			
	R5		11,450	140	4	0	2	11,181	136	4	0	2			
	D3		10,143	124	2	4	5	10,553	129	2	4	5			
	D5		10,651	130	3	4	5	11,082	135	3	4	5			
P60	R2	92	11,050	120	2	0	3	11,848	129	2	0	3	0.92	0.89	0.85
	R3		10,911	119	2	0	2	11,862	129	2	0	2			
	R5		12,199	133	4	0	2	12,756	139	4	0	2			
	D3		10,230	111	2	4	5	10,644	116	2	4	5			
	D5		11,074	120	3	4	5	11,523	125	3	4	5			

ATBS with VR

Performance Package	Distribution	Input Watts	3K (3000K CCT, 70 CRI)					4K/5K (4000K/5000K CCT, 70 CRI)					LLD @ 25°C		
			Lumens	LPW	B	U	G	Lumens	LPW	B	U	G	50k Hours	75k Hours	100k Hours
P10	R2 with VR	40	4,450	111	1	0	1	4,561	114	1	0	1	0.92	0.89	0.85
	R3 with VR		4,273	107	1	0	1	4,605	115	1	0	1			
	R5 with VR		4,539	113	2	0	1	4,679	117	2	0	1			
P20	R2 with VR	50	5,491	110	1	0	1	5,550	111	1	0	1	0.92	0.89	0.85
	R3 with VR		5,379	108	1	0	1	5,582	112	2	0	1			
	R5 with VR		5,647	113	2	0	1	5,692	114	2	0	1			
P30	R2 with VR	60	6,479	108	2	0	1	6,530	109	2	0	1	0.92	0.89	0.85
	R3 with VR		6,400	107	2	0	1	6,564	109	2	0	1			
	R5 with VR		6,703	112	3	0	1	6,693	112	2	0	1			
P40	R2 with VR	70	7,307	104	2	0	1	7,561	108	2	0	1	0.92	0.89	0.85
	R3 with VR		7,347	105	2	0	1	7,638	109	2	0	1			
	R5 with VR		7,693	110	3	0	1	7,749	111	3	0	1			
P50	R2 with VR	82	8,552	104	2	0	2	8,711	106	2	0	2	0.92	0.89	0.85
	R3 with VR		8,494	104	2	0	1	8,814	107	2	0	1			
	R5 with VR		8,895	108	3	0	1	8,911	109	3	0	1			
P60	R2 with VR	92	8,989	98	2	0	2	9,815	107	2	0	2	0.92	0.89	0.85
	R3 with VR		8,899	97	2	0	1	9,857	107	2	0	2			
	R5 with VR		9,309	101	3	0	1	10,256	111	3	0	1			

Note: Individual fixture performance may vary. Specifications subject to change without notice.



AEL Headquarters, One Lithonia Way, Conyers Georgia 30012
 www.americanelectricalighting.com Phone: 1-866-HOLOPHANE
 Email: TechSupport-Lighting@AcuityBrands.com

© 2014-2024 Acuity Brands Lighting, Inc. All Rights Reserved. Rev. 09/19/24 ATBS

Warranty Five-year limited warranty. This is the only warranty provided and no other statements in this specification sheet create any warranty of any kind. All other express and implied warranties are disclaimed. Complete warranty terms located at:
www.acuitybrands.com/support/warranty/terms-and-conditions

Note: Actual performance may differ as a result of end-user environment and application. All values are design or typical values, measured under laboratory conditions at 25 °C. Specifications subject to change without notice.

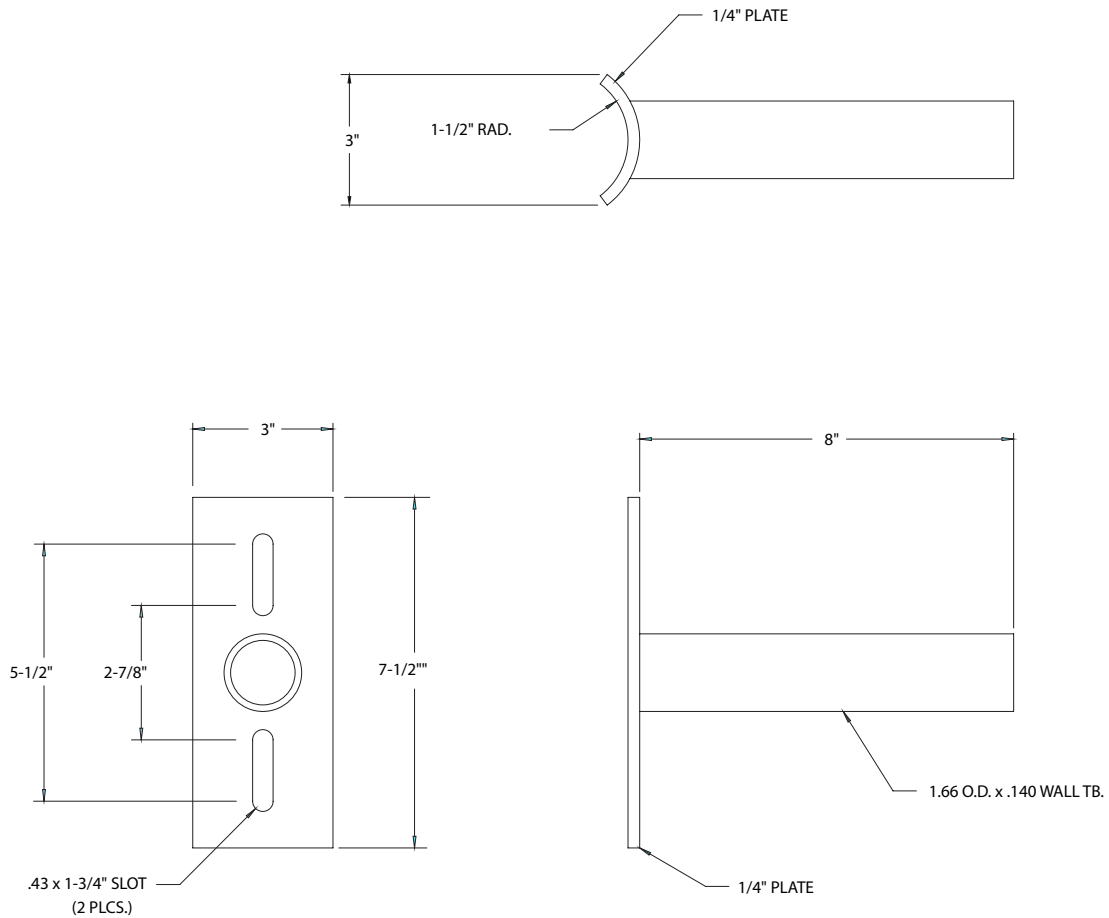
Please contact your sales representative for the latest product information.

Autobahn Series ATBS

Roadway & Security Lighting

UMR POLE ADAPTOR

RECOMMENDED FOR USE WITH POLES OF 4" DIAMETER OR SMALLER



UMS POLE ADAPTOR



AEL Headquarters, One Lithonia Way, Conyers Georgia 30012
www.americanelectriclighting.com Phone: 1-866-HOLOPHANE
Email: TechSupport-Lighting@AcuityBrands.com

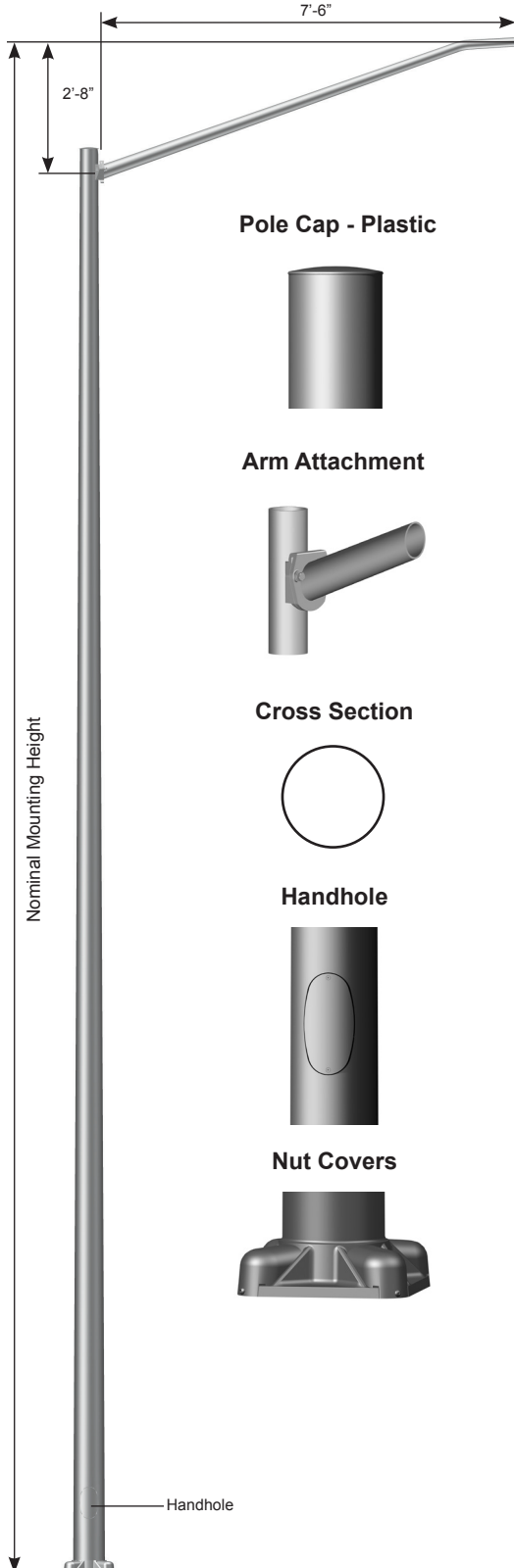
© 2014-2024 Acuity Brands Lighting, Inc. All Rights Reserved. Rev. 09/19/24 ATBS

Warranty Five-year limited warranty. This is the only warranty provided and no other statements in this specification sheet create any warranty of any kind. All other express and implied warranties are disclaimed. Complete warranty terms located at: www.acuitybrands.com/support/warranty/terms-and-conditions

Note: Actual performance may differ as a result of end-user environment and application. All values are design or typical values, measured under laboratory conditions at 25 °C. Specifications subject to change without notice.

Please contact your sales representative for the latest product information.

Job Name: _____	Client Name: _____
Job Location - City: _____ State: _____	Created By: _____ Date: _____
Product: _____ Quote: _____	Customer Approval: _____ Date: _____



SPECIFICATIONS

Pole - The pole shaft is extruded from seamless alloy aluminum.

Pole Top - A removable pole cap is provided.

Luminaire Arm - Luminaire arms are conically tapered from seamless alloy aluminum to 2.38" OD at the luminaire end.

Luminaire Arm Attachment - Connection allows arm to be erected and held in place by gravity and secured by two bolts.

Handhole - A covered handhole with hardware and grounding provision are provided.

Base Cover - Optional decorative base covers available as special order.

Anchor Base - The anchor base is cast from 356 alloy aluminum. The completed assembly is heat-treated to a T6 temper. Aluminum nut covers are included with anchor base unless otherwise specified.

Anchor Bolts - Anchor bolts conform to ASTM F1554 Grade 55 and are provided with two hex nuts and two flat washers. Bolts have an "L" bend on one end and are galvanized a minimum of 12" on the threaded end.

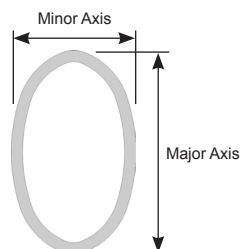
Hardware - All structural and non-structural fasteners are stainless steel.

Finish - The standard finish for the pole assembly and components is satin brushed, natural anodize, duranodic or polyester powder applied coating in accordance with Valmont's Specifications. Additional finish options available upon request.

Design Criteria - Please reference Design Criteria Specification for appropriate design conditions.

ARM DATA

Ovalized Arm Cross Section



ROUND TAPERED ALUMINUM Elliptical Mast Arm 8' Single - Double Simplex Mount

valmont

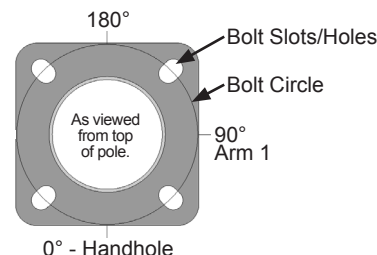
STRUCTURES

Job Name: _____	Client Name: _____
Job Location - City: _____ State: _____	Created By: _____ Date: _____
Product: _____ Quote: _____	Customer Approval: _____ Date: _____

ANCHORAGE DATA

POLE		BASE PLATE				ANCHOR BOLTS		
BASE OD (IN)	WALL THK (IN)	BOLT CIRCLE		SQUARE (IN)	THK (IN)	DIA x LENGTH x HOOK (IN)	PROJECTION (IN)	± (IN)
		DIA (IN)	± (IN)					
6.00	0.156	9.50	0.75	10.32	0.630	0.75 x 17.00 x 3.00	3.50	N/A
6.00	0.188	9.50	0.75	10.32	0.630	0.75 x 17.00 x 3.00	3.50	N/A
7.00	0.156	10.56	0.43	11.26	0.750	1.00 x 36.00 x 4.00	4.13	N/A
8.00	0.156	11.63	0.37	12.05	0.750	1.00 x 36.00 x 4.00	4.13	N/A
8.00	0.188	11.63	0.37	12.05	0.750	1.00 x 36.00 x 4.00	4.13	N/A
8.00	0.250	11.63	0.37	12.05	0.750	1.00 x 36.00 x 4.00	4.13	N/A
9.00	0.156	13.25	0.75	12.48	1.250	1.00 x 36.00 x 4.00	4.13	N/A
9.00	0.188	13.25	0.75	12.48	1.250	1.00 x 36.00 x 4.00	4.13	N/A

Anchor Base Detail



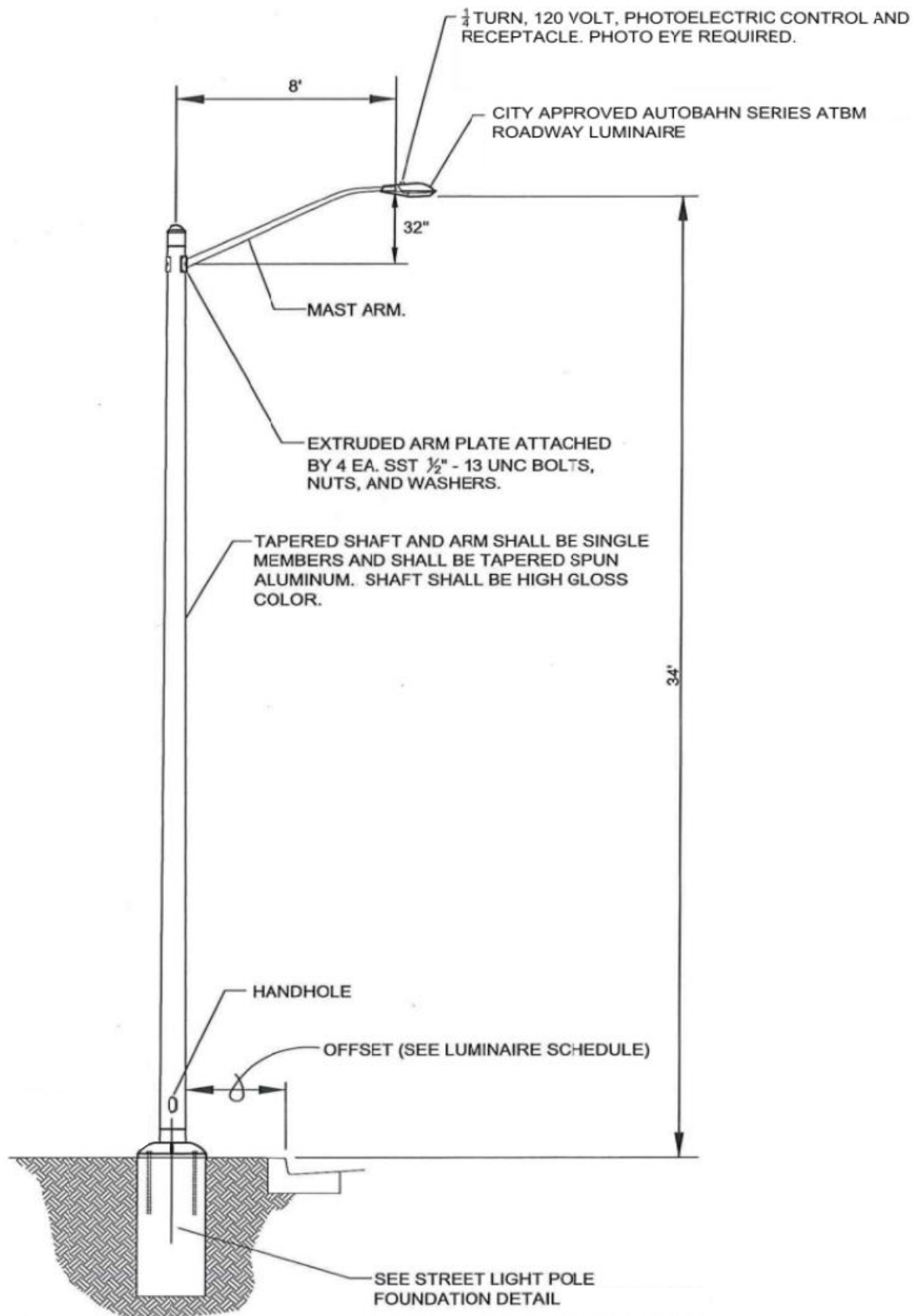
LOAD AND DIMENSIONAL DATA

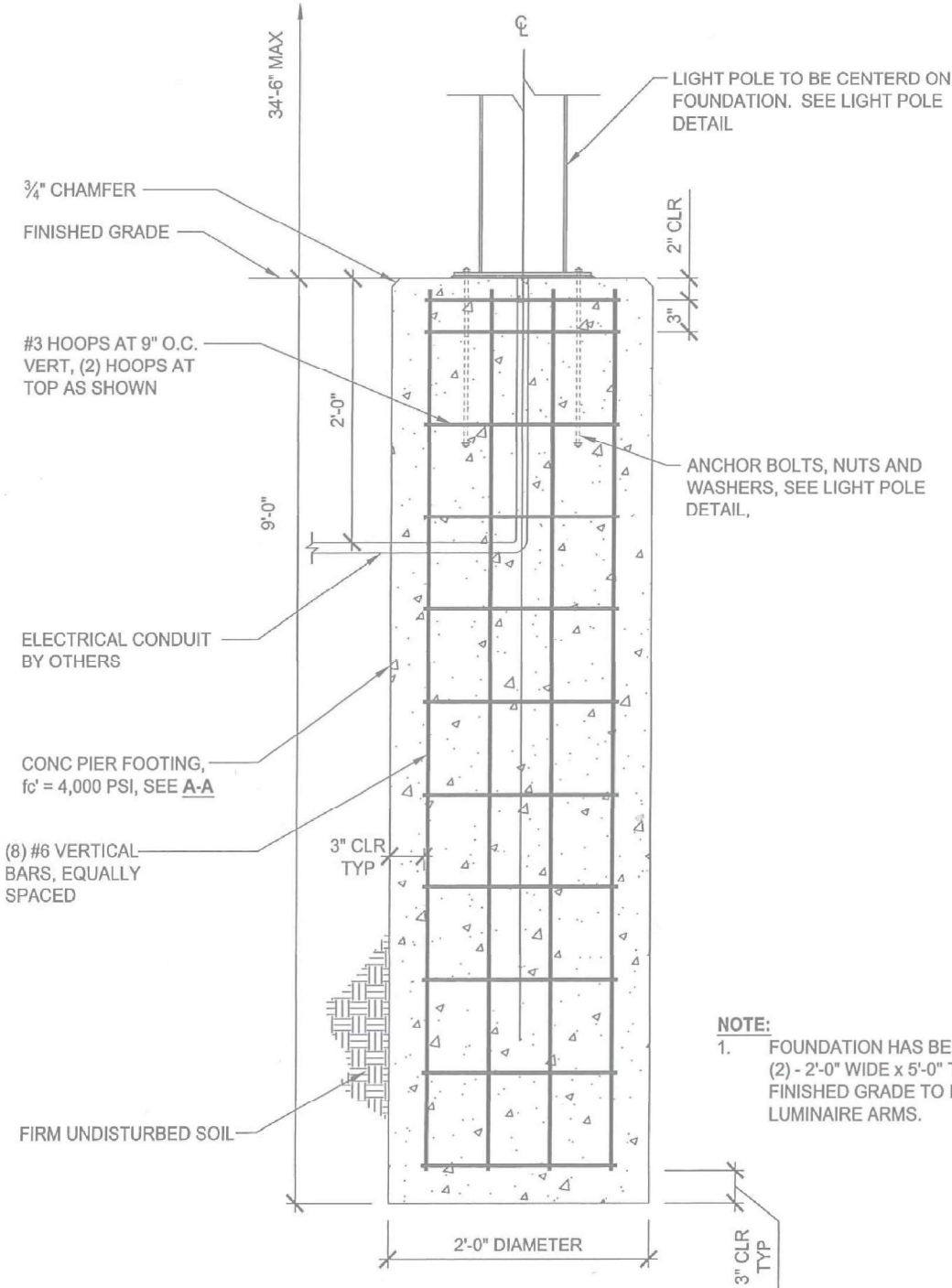
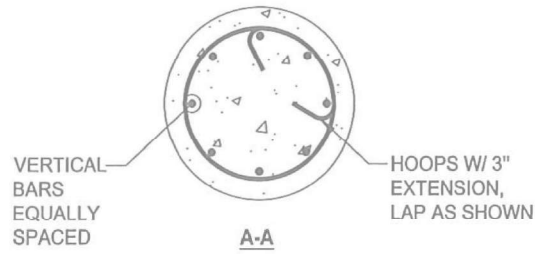
DESIGN INFORMATION							POLE DIMENSIONS					STRUCTURE WEIGHT ² (LBS)	MODEL NUMBER
NOMINAL MOUNTING HEIGHT	MAX WEIGHT ¹ (LBS)	70 MPH w/1.3 GUST MAX EPA ¹ (SQ FT)	80 MPH w/1.3 GUST MAX EPA ¹ (SQ FT)	90 MPH w/1.3 GUST MAX EPA ¹ (SQ FT)	100 MPH w/1.3 GUST MAX EPA ¹ (SQ FT)	110 MPH w/1.3 GUST MAX EPA ¹ (SQ FT)	POLE HEIGHT	BASE OD (IN)	TOP OD (IN)	WALL THK (IN)			
20'-0"	65	4.5	3.2	2.4	1.7	1.3	17'-8"	6.00	4.00	0.156	72	1MA0832S-170840605T4	
25'-0"	50	4.5	3.2	1.9	0.8	N/A	22'-8"	6.00	4.00	0.156	86	1MA0832S-220840605T4	
	60	4.5	3.2	2.4	1.7	1.0	22'-8"	6.00	4.00	0.188	98	1MA0832S-220840606T4	
	65	4.5	3.2	2.4	1.7	1.3	22'-8"	7.00	4.00	0.156	94	1MA0832S-220840705T4	
30'-0"	50	4.5	3.2	2.0	0.8	N/A	27'-8"	7.00	4.00	0.156	110	+1MA0832S-270840705T4	
	75	4.5	3.2	2.4	1.7	1.3	27'-8"	8.00	4.50	0.156	123	1MA0832S-270845805T4	
35'-0"	70	4.5	3.2	2.1	0.9	N/A	32'-8"	8.00	4.50	0.156	142	+1MA0832S-320845805T4	
	75	4.5	3.2	2.4	1.7	1.2	32'-8"	8.00	4.50	0.188	166	1MA0832S-320845806T4	
	75	4.5	3.2	2.4	1.7	1.3	32'-8"	8.00	4.50	0.250	211	1MA0832S-320845808T4	
	75	4.5	3.2	2.4	1.7	1.3	32'-8"	9.00	4.50	0.156	157	+1MA0832S-320845905T4	
	75	4.5	3.2	2.4	1.7	1.3	32'-8"	9.00	4.50	0.188	183	1MA0832S-320845906T4	
39'-0"	75	4.5	3.2	1.9	0.7	N/A	36'-8"	8.00	4.50	0.188	188	+1MA0832S-360845806T4	
	75	4.5	3.2	2.4	1.2	N/A	36'-8"	9.00	4.50	0.156	178	+1MA0832S-360845905T4	
	75	4.5	3.2	2.4	1.7	1.3	36'-8"	8.00	4.50	0.250	239	1MA0832S-360845808T4	
	75	4.5	3.2	2.4	1.7	1.3	36'-8"	9.00	4.50	0.188	207	+1MA0832S-360845906T4	

- EPA represents the Effective Projected Area of each luminaire. Designs are limited to one luminaire per arm. Variations from sizes above are available upon inquiry at the factory. Satisfactory performance of poles is dependent upon the pole being properly attached to a supporting foundation of adequate design.
- Structure weight is a nominal value which includes the pole shaft, base plate and luminaire arm(s).
+ Pole includes factory installed vibration damper.

PRODUCT ORDERING CODES

CROSS SECTION	MODEL NUMBER	COLOR		OPTIONS
R				
R = Round	1MA0832S-170840605T4 1MA0832S-220840605T4 1MA0832S-220840606T4 1MA0832S-220840705T4 +1MA0832S-270840705T4 1MA0832S-270845805T4 +1MA0832S-320845805T4 1MA0832S-320845806T4 1MA0832S-320845808T4 +1MA0832S-320845905T4 1MA0832S-320845906T4 +1MA0832S-360845806T4 +1MA0832S-360845905T4 1MA0832S-360845808T4 +1MA0832S-360845906T4	Polyester Powder DWH = White DSS = Sandstone BR = Burgundy HG = Hunter Green DNA = Natural Aluminum DCG = Charcoal Gray DMB = Medium Bronze SBN = Sanded Brown DNB = New Dark Bronze DDB = Dark Bronze SBK = Sanded Black DBL = Black DSB = Steel Blue DTG = Dark Green DBR = Red SC = Special Color (Contact Factory)	Anodized 204 = Clear Natural 311 = Light Bronze* 312 = Medium Bronze* 313 = Dark Bronze* 335 = Black* *Duranodic Anodize Brushed SBF = Satin Brushed	See Accessories at valmontstructures.com (Please Specify with Code)

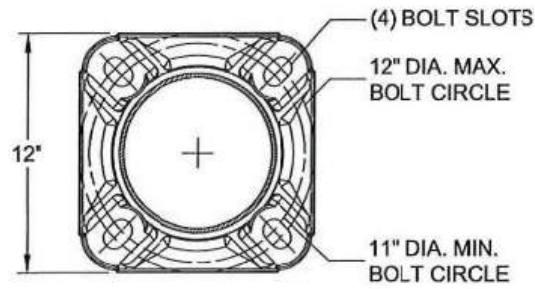




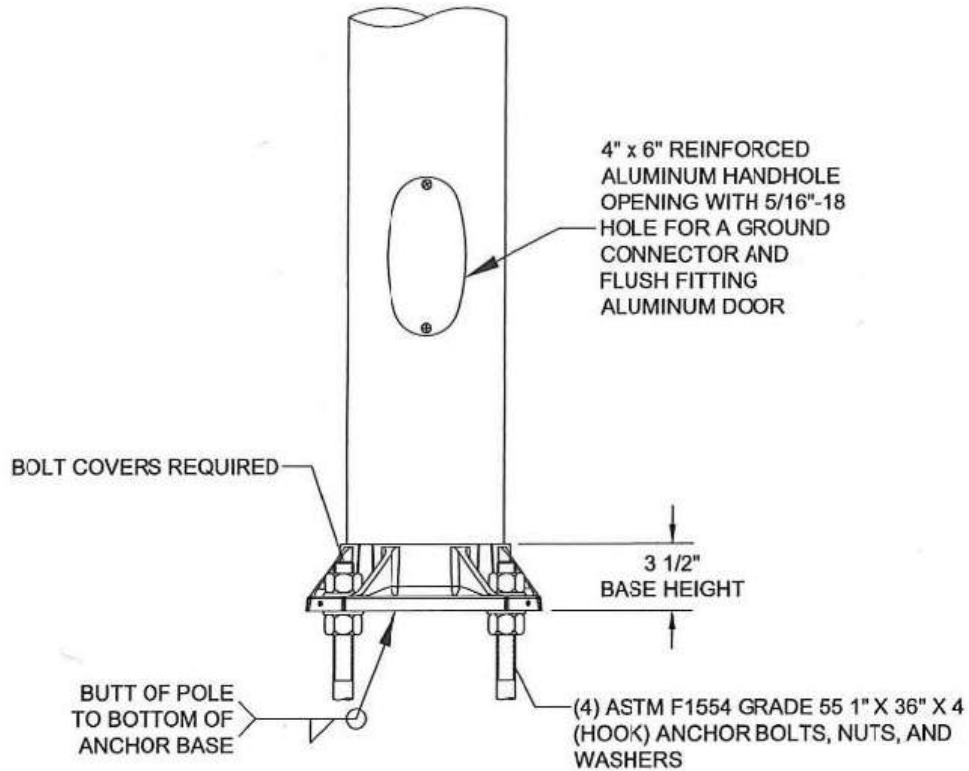
NOTE:

1. FOUNDATION HAS BEEN DESIGNED TO ACCOMMODATE (2) - 2'-0" WIDE x 5'-0" TALL BANNER SIGN MOUNTED 15'-0" FROM FINISHED GRADE TO BOTTOM OF BANNER AND (2) 8'-0" SPAN LUMINAIRE ARMS.

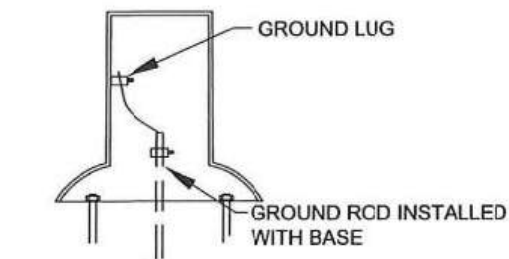
STREET LIGHT POLE FOUNDATION



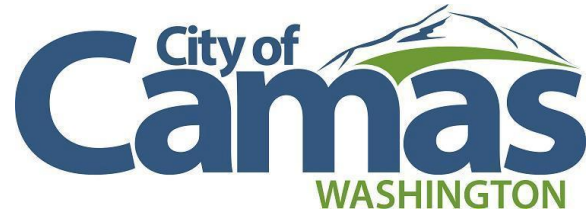
DETAIL B



DETAIL A



GROUNDING DETAIL



Street Lighting Local Roads (Acorn)

Luminaire - CLP-ACRN-FT2-TP5-LE-MOGUL-BK-T3-FNL2

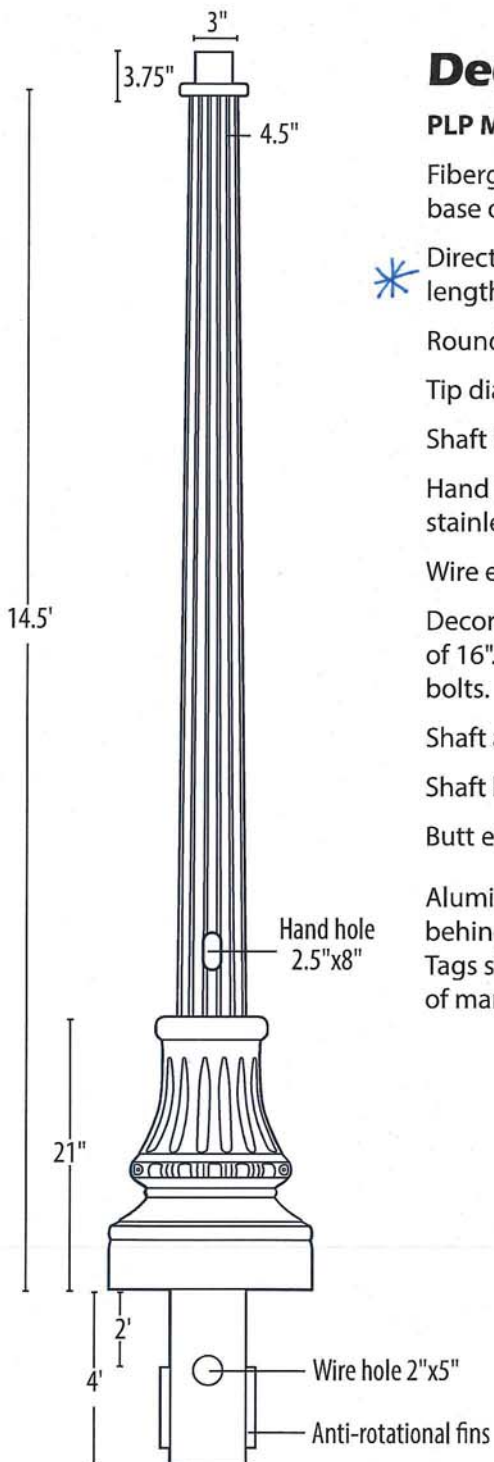
Bulb - LED-8087M345D-G4

Light Pole - PLP Composite Technologies DOM-DB-FL-14.5-BL-CI



Decorative Pole Specifications

PLP Model# Dom-DB-FL-14.5-BL-CI



Decorative Pole Specifications

PLP Model# Dom-DB-FL-14.5-BL-CI

Fiberglass reinforced composite fluted shaft with decorative 2-piece (clam shell) base of casting urethane.

* Direct burial (embedded) style with a 14.5' mounting height and an overall length of 18.5' allowing 4 feet to be buried below grade.

Round tapered fluted shaft.

Tip diameter is 4.5" and ground level diameter is 6.5".

Shaft hand hole is 2.5"x8" above the decorative base.

Hand hole is equipped with a non-conductive cover with vandal resistant 1/4-20 stainless steel screws.

Wire entrance hole of 2"x5" with nylon grommet 2' below grade.

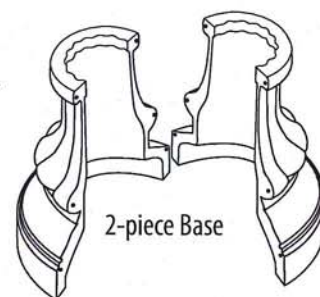
Decorative base for the PLP "Dominion" design is 21" high with a base diameter of 16". The 2-piece "clam shell" design is secured together with stainless steel bolts.

Shaft and decorative base are black with a textured satin "cast iron" finish.

Shaft has a post top steel tenon of 3"x3.75"

Butt end of the shaft has anti-rotational/anti-lift fins.

Aluminum identification tags are fixed to the shaft behind the base and on the inside of the base itself. Tags show manufacturer, model number and date of manufacture.



PLP Composite Technologies, Inc.

57 Creamery Road • PO Box 429 • Fitzwilliam, NH 03447 • Tel: 603-585-9100 • Fax: 603-585-3470 • www.plpcomp.com

Installation Instructions

Direct Burial Base

NOTE:

These are general instructions for direct burial base installation. **We strongly suggest you have a local civil engineer evaluate the soil conditions for suitability and defer to the civil engineer's recommendations for installation.**

Have the site checked for buried utilities before you begin.

Holophane will not be held responsible for any accidents or loss due to improper installation or unsafe work practices.

IMPORTANT SAFETY INSTRUCTIONS:

(For your protection and to avoid injury, read carefully)

- * Trained and certified personnel should perform installation
- * Use proper lifting equipment and safety harnesses
- * Wear safety glasses and steel-toe shoes
- * DO NOT install in adverse weather conditions such as rain or high wind

WARNING

Never attempt to service equipment while power supply is engaged. Disconnect power supply before performing service.

**SAVE INSTRUCTIONS
FOR FUTURE REFERENCE**

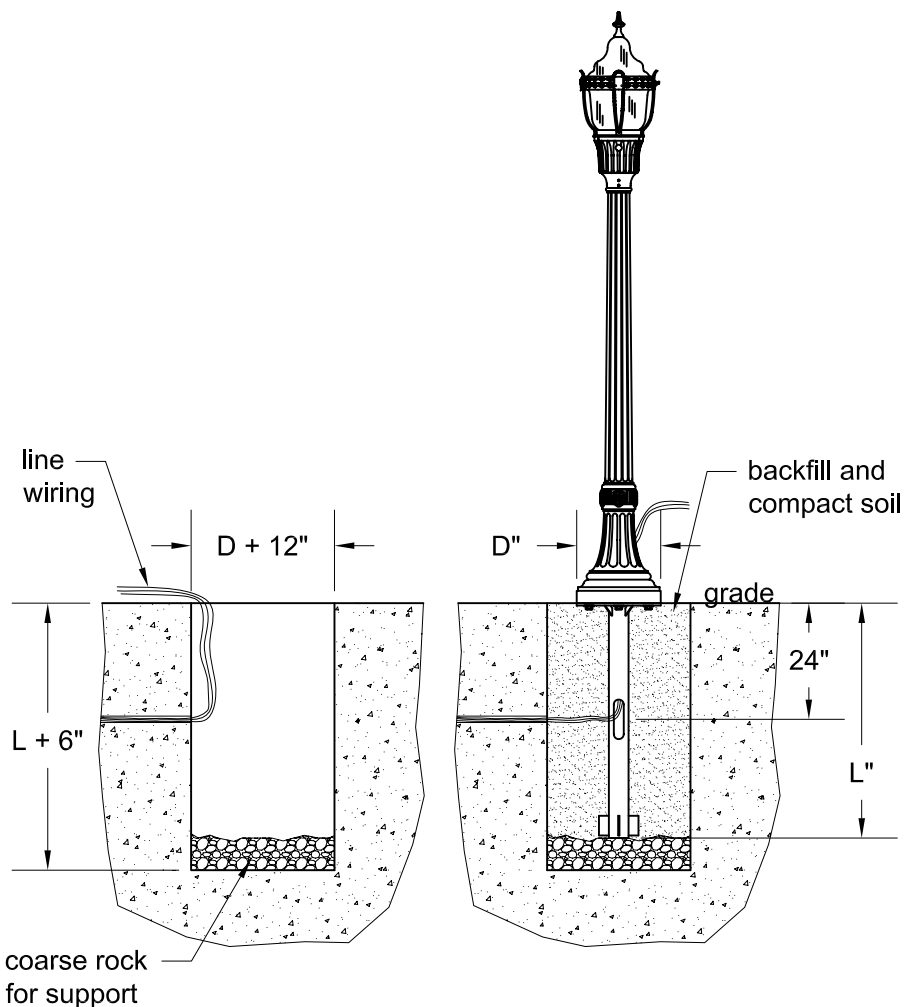


Prior to Installation

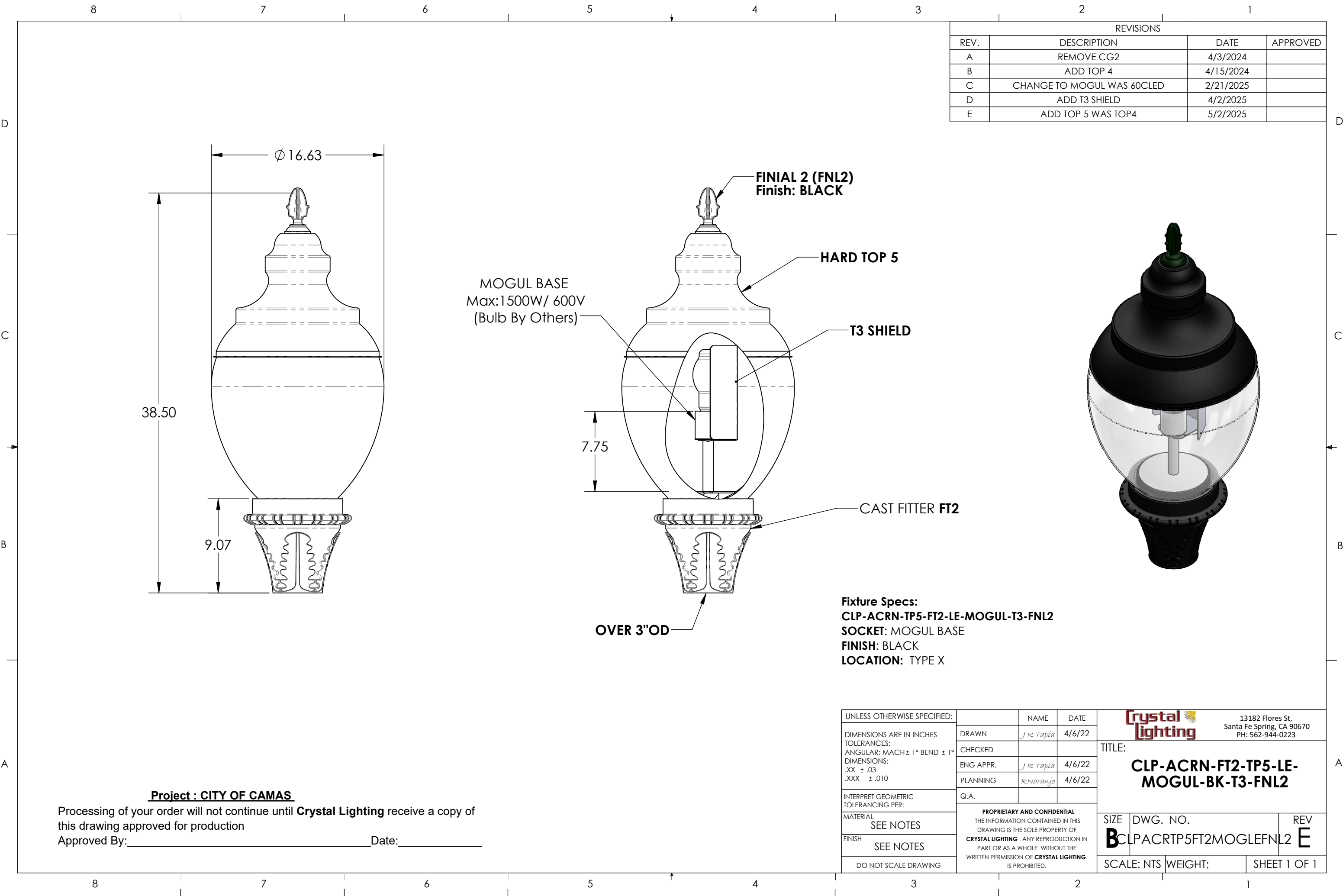
Read carefully before installation. If you do not understand these instructions, please contact your local sales representative before installation.

Installation Instructions:


1. Dig a straight-sided hole to a depth 6" deeper than the direct burial base is long. Hole diameter should be approximately 12" larger than the post base diameter.
2. Route wiring to hole. Generally, there is a wireway into the direct burial base 24" below grade.
3. Fill bottom of hole with coarse rock to a level that will put the post base at grade.
4. Set post in hole and route wiring through direct burial base up into post base.
5. Orient and plumb post, then backfill hole, tamping and compacting soil as you go.



TSG002378



REVISIONS			
REV.	DESCRIPTION	DATE	APPROVED
A	REMOVE CG2	4/3/2024	
B	ADD TOP 4	4/15/2024	
C	CHANGE TO MOGUL WAS 60CLED	2/21/2025	
D	ADD T3 SHIELD	4/2/2025	
E	ADD TOP 5 WAS TOP4	5/2/2025	

UNLESS OTHERWISE SPECIFIED:		NAME		DATE		<div><div>13182 Flores St, Santa Fe Spring, CA 90670 PH: 562-944-0223</div></div>					
DIMENSIONS ARE IN INCHES TOLERANCES: ANGULAR: MACH ± 1° BEND ± 1° DIMENSIONS: .XX ± .03 .XXX ± .010 INTERPRET GEOMETRIC TOLERANCING PER: MATERIAL SEE NOTES FINISH SEE NOTES DO NOT SCALE DRAWING		DRAWN	J R Tapia	4/6/22		TITLE: CLP-ACRN-FT2-TP5-LE-MOGUL-BK-T3-FNL2					
		CHECKED									
		ENG APPR.	J R Tapia	4/6/22							
		PLANNING	R Navarajo	4/6/22							
		Q.A.									
		PROPRIETARY AND CONFIDENTIAL THE INFORMATION CONTAINED IN THIS DRAWING IS THE SOLE PROPERTY OF CRYSTAL LIGHTING . ANY REPRODUCTION IN PART OR AS A WHOLE WITHOUT THE WRITTEN PERMISSION OF CRYSTAL LIGHTING . IS PROHIBITED.				SIZE B		DWG. NO. CLPACRTP5FT2MOGLEFNL2		REV E	
						SCALE: NTS		WEIGHT:		SHEET 1 OF 1	

Project : CITY OF CAMAS

Processing of your order will not continue until **Crystal Lighting** receive a copy of this drawing approved for production

Approved By: _____ Date: _____

SCREW-IN
RETROFITS



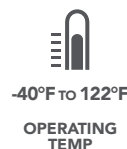
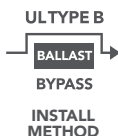
FLEXCOLOR SHOE BOX / WALL PACK



← flexCOLOR
switch
between
color
temps

← rotatable
base

- 30W, 50W, 80W, and 110W models replacing up to 400W HID.
- Switch between 3000K, 4000K, & 5000K right on the unit.
- Light panel can rotate once the base is tightened to direct light out of the fixture.
- Includes a fan and thermal sensor to run cool and ensure a long and bright life.
- Enclosed fixture safe and approved for damp locations.
- LED-8090-HV: 277-480V.
(can be used on 347V)
- "D" Models dim to 50% by selecting "LO" on the switch located on the top of the lamp only.



PART #	UPC	REPLACES	WATTAGE	LUMENS	COLOR	BASE	DLC CODES
LED-8087E345D-G4	844006074432	100W HID	30W	3500/4200/4300	3000K/4000K/5000K	E26	N/A
LED-8087M345D-G4	844006074456	100W HID	30W	3500/4200/4300	3000K/4000K/5000K	EX39	P1CK54P3
LED-8088E345D-G4	844006074470	175W HID	50W	6400/6900/7200	3000K/4000K/5000K	E26	N/A
LED-8088M345D-G4	844006074494	175W HID	50W	6400/6900/7200	3000K/4000K/5000K	EX39	P6YHOJXP
LED-8089M345D-G4	844006074517	250W HID	80W	10600/10700/10800	3000K/4000K/5000K	EX39	PE1R64EU
LED-8090M345D-G4	844006074524	400W HID	110W	14500/15400/15700	3000K/4000K/5000K	EX39	PTGQIRSF
LED-8090M345D-G4-HV	844006074760	400W HID	110W	14500/15400/15700	3000K/4000K/5000K	EX39	PLOZ2S2U

* See page 2 for product dimensions

* See page 2 for 347 volt options for Canada.



* "D" Models available in Fall 2022





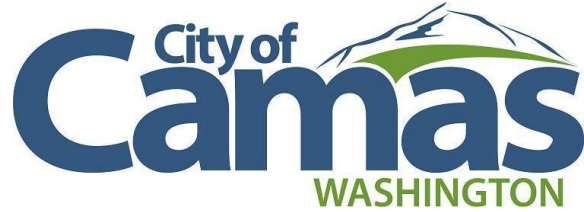
FLEXCOLOR SHOE BOX/WALL PACK

🇨🇦 347 VOLT OPTIONS FOR CANADA 🇨🇦

PART #	UPC	REPLACES	WATTAGE	LUMENS	COLOR	BASE	DLC CODES
LED-8087E345CD-G4	844006074425	100W HID	30W	3500/4200/4300	3000K/4000K/5000K	E26	N/A
LED-8087M345CD-G4	844006074449	100W HID	30W	3500/4200/4300	3000K/4000K/5000K	EX39	PNARUA94
LED-8088E345CD-G4	844006074463	175W HID	50W	6400/6900/7200	3000K/4000K/5000K	E26	N/A
LED-8088M345CD-G4	844006074487	175W HID	50W	6400/6900/7200	3000K/4000K/5000K	EX39	PLK1XZP2
LED-8089M345CD-G4	844006074500	250W HID	80W	10600/10700/10800	3000K/4000K/5000K	EX39	PF34RTPP

PRODUCT DIMENSIONS

PART #	DIMENSIONS (LxW)
LED-8087E345D-G4	6.4 X 3.0 in.
LED-8087M345D-G4	6.9 X 3.0 in.
LED-8088E345D-G4	7.9 X 3.75 in.
LED-8088M345D-G4	8.5 X 3.75 in.
LED-8089M345D-G4	10.0 X 4.3 in.
LED-8090M345D-G4	11.4 X 4.3 in.
LED-8090M345D-G4-HV	11.4 X 4.3 in.
LED-8087E345CD-G4	6.4 X 3.0 in.
LED-8087M345CD-G4	6.9 X 3.0 in.
LED-8088E345CD-G4	7.9 X 3.75 in.
LED-8088M345CD-G4	8.5 X 3.75 in.
LED-8089M345CD-G4	10.0 X 4.3 in.



Street Lighting Private Roads (Acorn)

Luminaire - CLP-ACRN-FT2-TP5-LE-MOGUL-BK-T3-FNL2

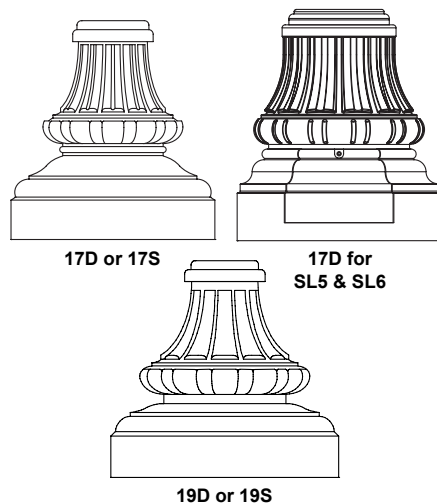
Bulb - LED-8087M345D-G4

Light Pole - PLP Composite Technologies DOM-DB-FL-14.5-BL-CI
or Optional Aluminum Pole WDA 14 F4C 17D C03 BK DBB

Catalog Number	
Notes	Type

WDA

Wadsworth Aluminum Pole



SPECIFICATIONS

General Description

The lighting post shall be all aluminum, one-piece construction, with a classic tapered and fluted base design.

Materials

- The base and fluted tapered cast shaft shall be heavy wall, cast aluminum produced from certified ASTM 356.1 ingot per ASTM B-179 or ASTM B26.
- The straight shafts shall be extruded from aluminum, ASTM 6061 alloy.
- The tapered shaft shall be extruded from aluminum, ASTM 6063 alloy, spun to a tapered shape.
- All hardware shall be tamper resistant stainless steel
- Anchor bolts to be completely hot dip galvanized.

Construction

- The shaft shall be double welded to the base casting and shipped as one piece for maximum structural integrity.
- The shaft shall be welded inside the base casting at the top of the access door, and externally where the shaft exits the base.
- All welding shall be per ANSI/AWS.

Dimensions

- The post height shall range from 8' to 22' with a 17 or 19" diameter base.
- At the top of the post, an integral tenon with a transitional donut shall be provided for luminaire mounting.

Installation

- The post shall be provided with four, hot dip galvanized L-type anchor bolts.
- A door shall be provided in the base for anchorage and wiring access.
- A grounding screw shall be provided inside the base opposite the door.

Warranty

1-Year Limited. This is the only warranty provided and no other statements in this specification sheet create any warranty of any kind. All other express and implied warranties are disclaimed. Complete warranty terms located at: www.acuitybrands.com/support/warranty/terms-and-conditions

IMPORTANT INSTALLATION NOTES:

- **Do not** erect poles without having fixtures installed.
- Factory-supplied templates must be used when setting anchor bolts. Acuity Brands Lighting will not accept claim for incorrect anchorage placement due to failure to use factory template.
- If poles are stored outside, all protective wrapping must be removed immediately upon delivery to prevent finish damage.
- Acuity Brands Lighting is not responsible for the foundation design.

Note: Actual performance may differ as a result of end-user environment and application.
Specifications subject to change without notice.

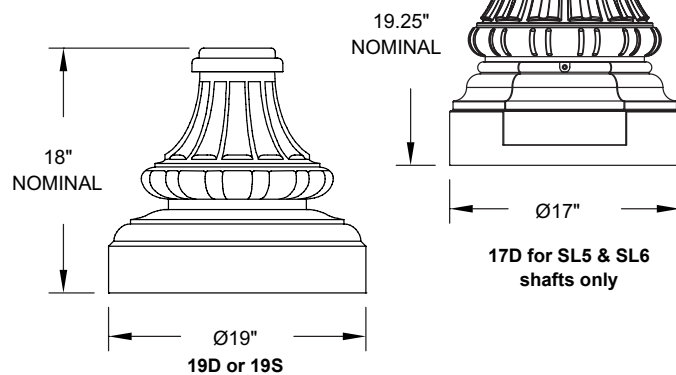
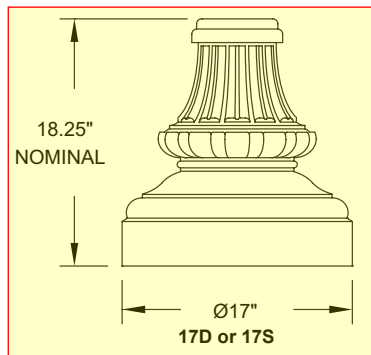
ORDERING INFORMATION

Example: WDA 14 S4C 17D C03 BK

Post	Height	Shaft Style	Base	Tenon
WDA Wadsworth Aluminum Pole	08 8 Feet	Fluted Shaft	17D 17" Base, Diamond Pattern Bolt Circle	PLN ¹ Plain pole top pole - no tenon
	09 9 Feet	FTJ Fluted Tapered (Cast), .25		C03 3X3 Tenon, (actual size 2.88 O.D. x 3" LG.)
	10 10 Feet	F4C 4" Diameter Fluted, .125 Wall	17S 17" Base, Square Pattern Bolt Circle	C04 3X4 Tenon, (actual size 2.88 O.D. X 4" LG.)
	11 11 Feet	F4J 4" Diameter Fluted, .25 Wall	19D 19" Base, Diamond Pattern Bolt Circle	C05 3X5 Tenon, (actual size 2.88 O.D. X 5" LG.)
	12 12 Feet	F5J 5" Diameter Fluted, .25 Wall	19S 19" Base, Square Pattern Bolt Circle	C06 3X6 Tenon, (actual size 2.88 O.D. X 6" LG.)
	13 13 Feet	SiteLink Shaft		C08 3X8 Tenon, (actual size 2.88 O.D. X 8" LG.)
	14 14 Feet	SL4 4.5" .156 Wall		C09 3X9 Tenon, (actual size 2.88 O.D. X 9" LG.)
	15 15 Feet	SL5 5.25" .25 Wall		C12 3X12 Tenon, (actual size 2.88 O.D. X 12" LG.)
	16 16 Feet	SL6 5.75" .25 Wall		C14 3X14 Tenon, (actual size 2.88 O.D. X 14" LG.)
	17 17 Feet	Smooth Shaft		E08 ² 3-1/2X8 Tenon, (actual size 3.5 O.D. X 8" LG.)
	18 18 Feet	S4C 4" Diameter .125 Wall		G12 ² 4-3/8X12 Tenon, (actual size 4.38 O.D. X 12" LG.)
	19 19 Feet	S4J 4" Diameter .25 Wall		H10 ² 4-1/2X10 Tenon, (actual size 4.5 O.D. X 10" LG.)
	20 20 Feet	S5J 5" Diameter .25 Wall		VGP ² VGC Plate
	21 21 Feet	Tapered Shaft		
	22 22 Feet	T4C 3" to 4" Diameter .125 Wall		
		T5C 3" to 5" Diameter .125 Wall		
	NOTE: Refer to Pole Guide on page 4 for height based on Shaft Style			NOTE: 1. Available with SL4, SL5 and SL6 shaft styles only 2. Available with F5J and S5J shaft styles only

Finish	Options	Welded Provisions	Accessories: Order as separate catalog number.
BK Black	DBB Factory installed direct burial base	EXXY ³ Provision for eye bolt	Anchor Bolt Sets: AB-27-4 ⁴ 1" Anchor bolt set, galvanized steel AB-31-4 3/4" Anchor bolt set, galvanized steel
BZ Bronze		LXXY ³ Large provision	
CMC Customer matched color	FGB GFI receptacle assembly inside base	RXXY ³ Receptacle provision	Direct Burial Bases: ADB81R4 ⁵ 17" Galvanized steel direct burial base ADB81R7 ⁵ 20" Galvanized steel direct burial base
CTBS Standard color to be determined	GRD 1/2 Brass grounding lug	SXXY ³ Small provision	Templates: TMP-85 12" Bolt Circle, (for 17D Base Option) TMP-157 12" Bolt Circle, (for 17S Base Option) TMP-98 15" Bolt Circle, (for 19D Base Option) TMP-158 15" Bolt Circle, (for 19S Base Option) TMP40010 12" Bolt Circle, (for 17D Base Option): for SiteLink Shafts only
DB Dark Blue		SBORXXY ³ Occupancy sensor provision	Breakaway Kits & Transpo Couplings: BWKT 1700R 1200BC 075AB xx For use with 17" base, excludes SiteLink. Breakaway Kit for 3/4" anchor bolts, includes Bearing Plate and Skirt (xx=finish). Transpo breakaway couplings shipped as separate line item (TRANSP0-SPM4075XL) TRANSP0-SPM4075XL Transpo breakaway couplings for BWKT 1700R 1200BC 075AB BWKT 1700R 1200BC 100AB xx For use with 17" base, only SiteLink. Breakaway Kit for 1" anchor bolts, includes Bearing Plate and Skirt (xx=finish). Transpo breakaway couplings shipped as separate line item (TRANSP0-SPM4100XL) TRANSP0-SPM4100XL Transpo breakaway couplings for BWKT 1700R 1200BC 100AB BWKT 1900R 1500BC 075AB xx For use with 19". Breakaway Kit for 3/4" anchor bolts, includes Bearing Plate and Skirt (xx=finish). Transpo breakaway couplings shipped as separate line item (TRANSP0-SPM4075XL) TRANSP0-SPM4075XL Transpo breakaway couplings for BWKT 1900R 1500BC 075AB
GH Graphite			NOTE: 4 For use with SL6 poles. 5 Base moment cannot exceed 3800 ft. lbs. Must validate wind load calculation. Not available with SL5 and SL6 Shaft styles.
GN Green			
GR Gray			
PP Prime Painted			
RALxxxxSDCR RAL Super Durable Corrosion Resistant, 80% Gloss Paint, replace xxxx with RAL number.			
SL Silver			
WH White			
		NOTE: 3 Replace "XXX" with height from grade (inches), can be up to 3 digits. Must use whole numbers. Leading zeros are not used. Replace Y with orientation from hand hole (A=0, B=90, C=180, D=270). Add multiple provisions as necessary to cover each location. Must validate EPA restrictions for banners.	

DIMENSIONAL DATA



Shaft Style



4.5" SL4
SiteLink



4" Dia. Smooth
S4C & S4J



3"-4" Dia. Tapered
T4C



5.25" SL5
SiteLink



5" Dia. Smooth
S5J



3"-5" Dia. Tapered
T5C



5.75" SL6
SiteLink



5" Dia. Fluted
F5J

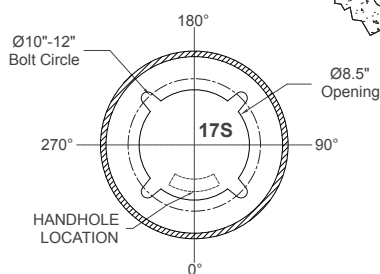
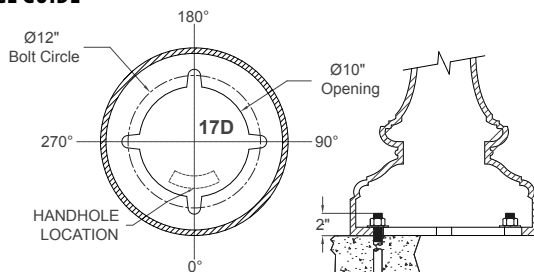


4" Dia. Fluted
F4C & F4J

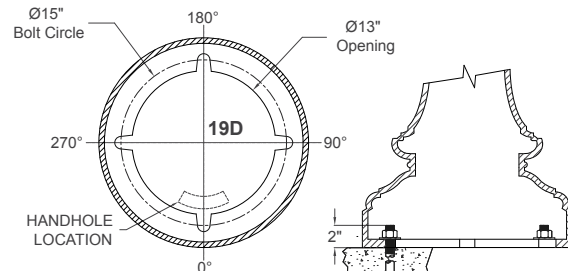


Fluted Tapered
FTJ

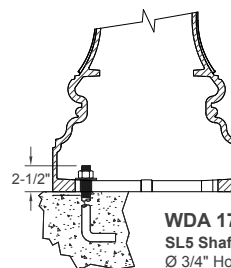
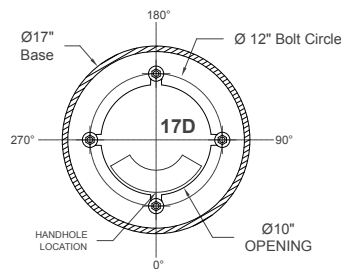
ANCHORAGE GUIDE



WDA 17D or 17S
 Ø 3/4" Hot Dip Galvanized L-type Anchor Bolts (4 per Post)



WDA 19D or 19S
 Ø 3/4" Hot Dip Galvanized L-type Anchor Bolts (4 per Post)



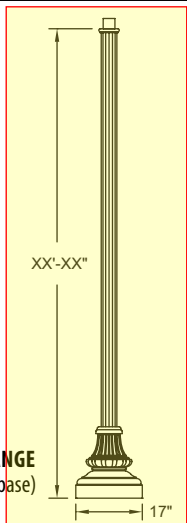
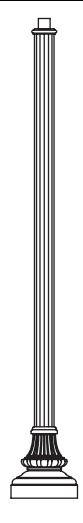
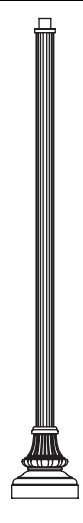
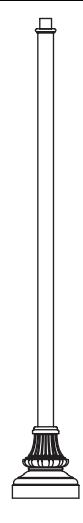
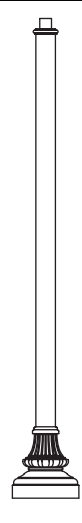
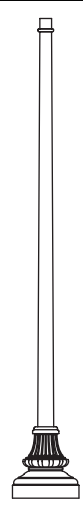
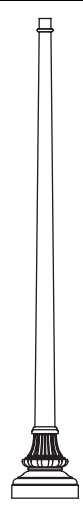
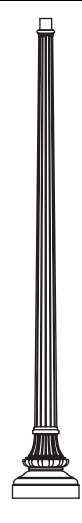
WDA 17D for SL5 & SL6

SL5 Shaft
 Ø 3/4" Hot Dip Galvanized L-type Anchor Bolts (4 per Post)

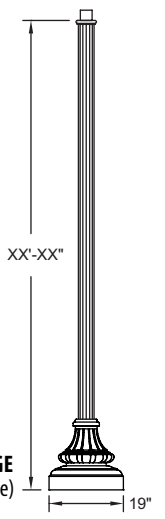
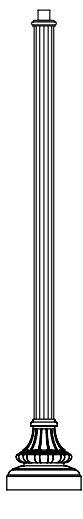
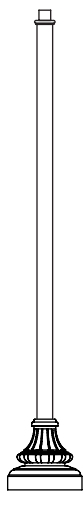
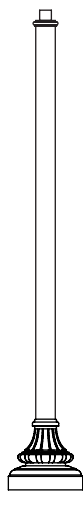
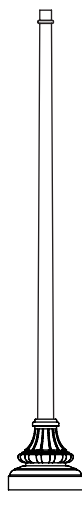
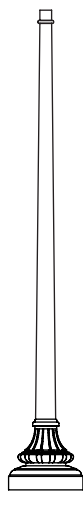
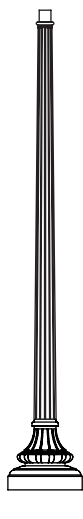
SL6 Shaft
 Ø 1" Hot Dip Galvanized L-type Anchor Bolts (4 per Post)

POLE GUIDE

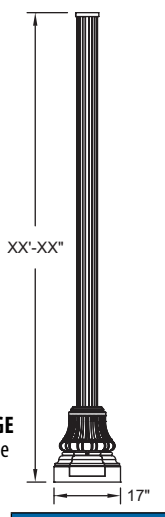

POLE HEIGHT RANGE
(For 17" diameter base)

							
F4C & F4J	F5J	SL4	S4C & S4J	S5J	T4C	T5C	FTJ
8' to 14'	10' to 16'	8' to 16'	8' to 14'	10' to 16'	8' to 14'	10' to 16'	8', 10', 12' 14' Only

POLE HEIGHT RANGE
(For 19" diameter base)

						
F4C & F4J	F5J	S4C & S4J	S5J	T4C	T5C	FTJ
8' to 14'	10' to 16'	8' to 14'	10' to 16'	8' to 14'	10' to 16'	8', 10', 12' 14' Only

POLE HEIGHT RANGE
(For 17" diameter base
SL5 & SL6 only)

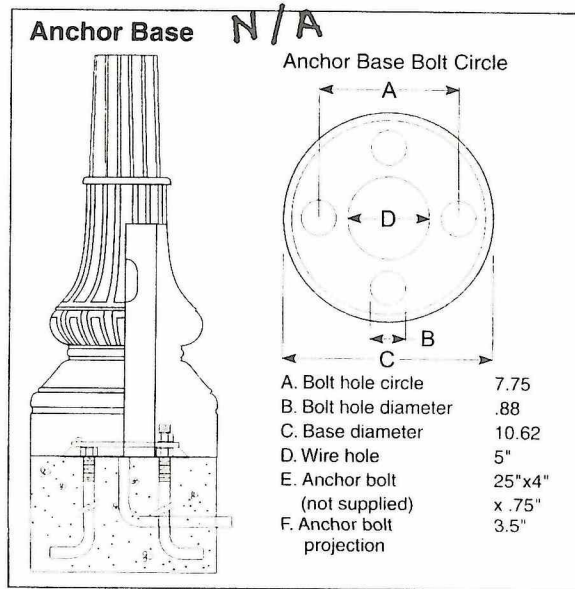
	
SL5	SL6
8' to 22'	8' to 22'



Decorative Composite Lamp Posts

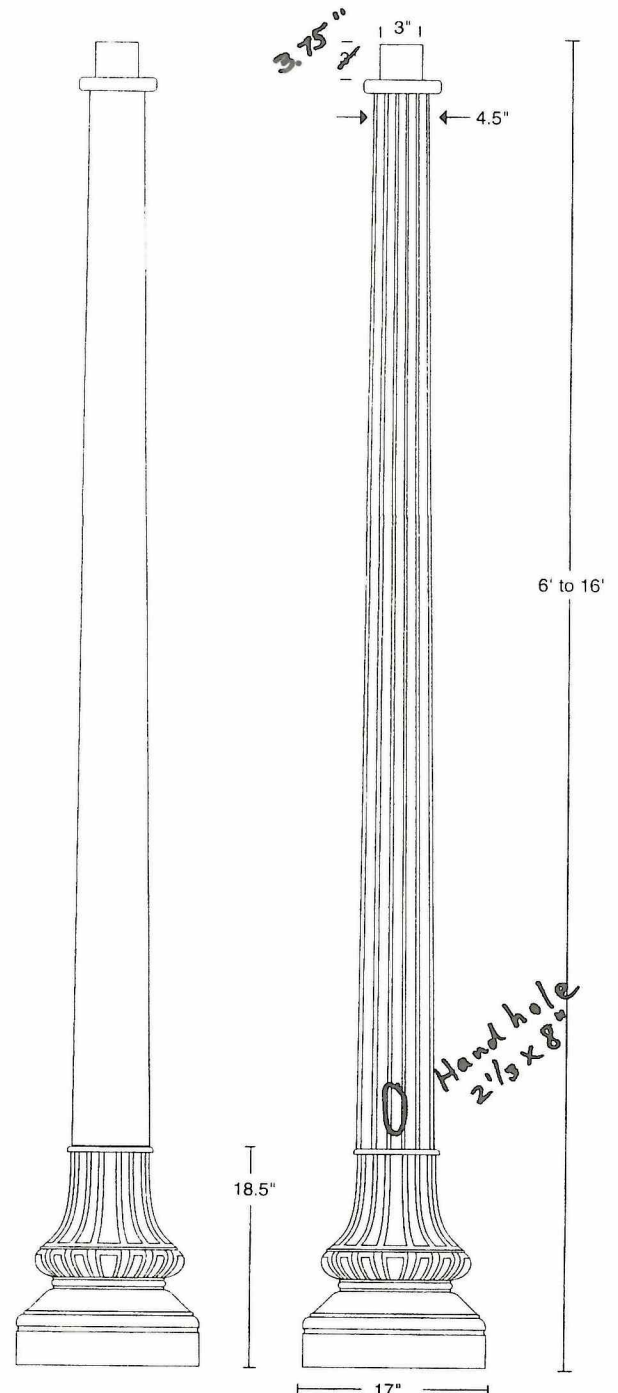
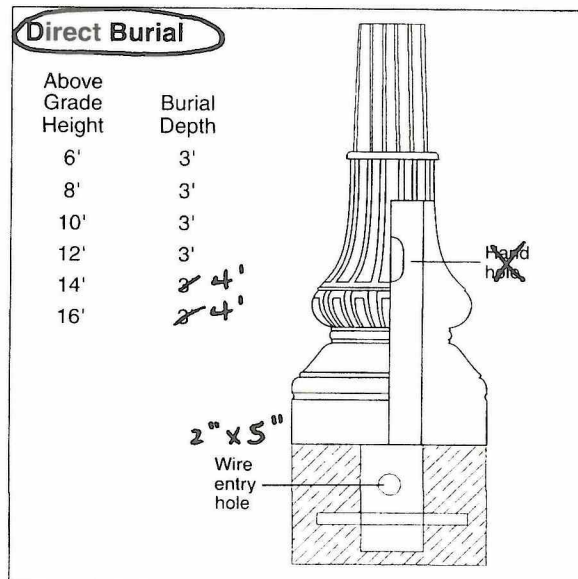
DOMINION SERIES

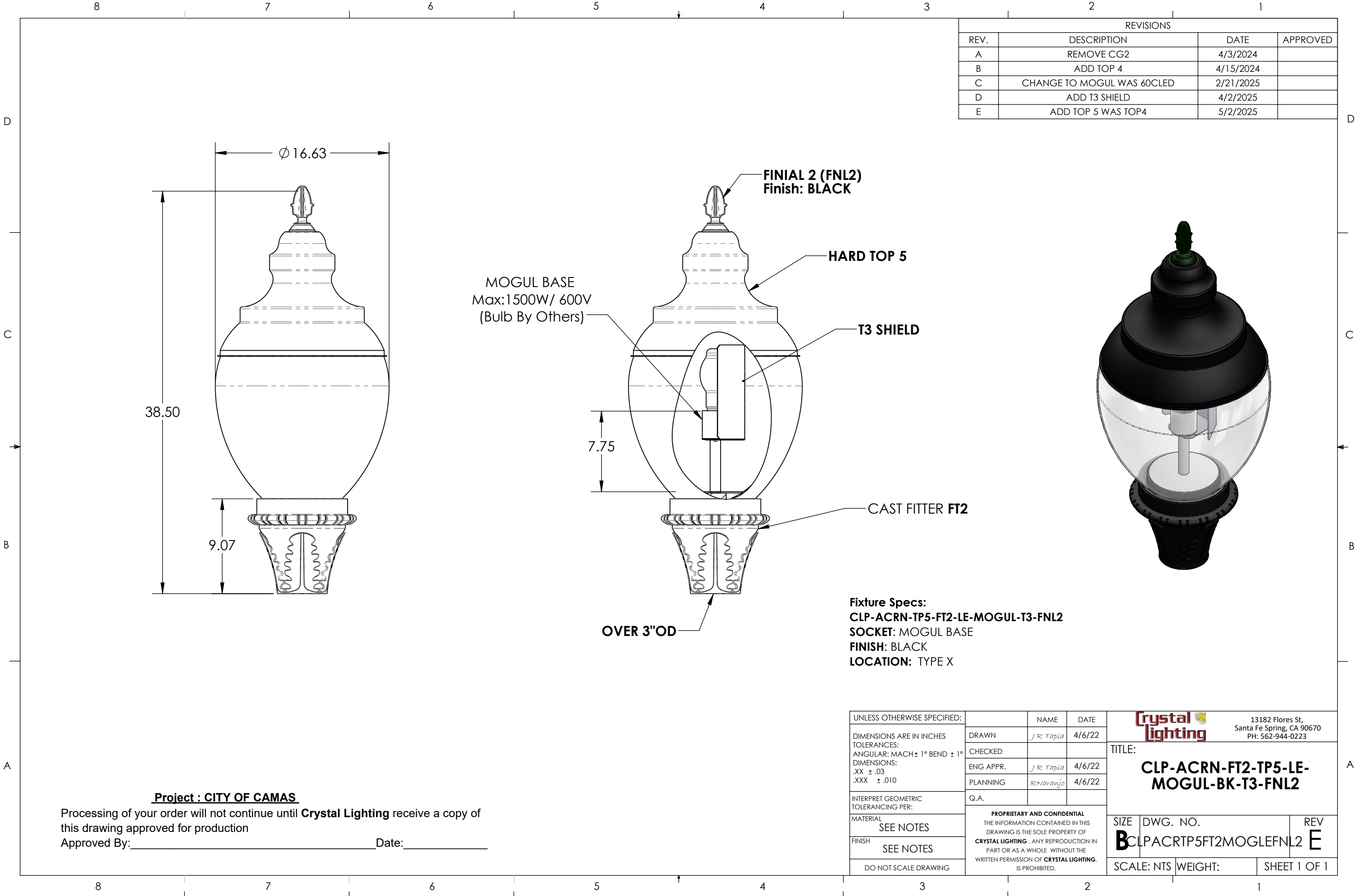
- Tapered Shaft •
- Fluted or Smooth •
- Anchor Base or Direct Burial •
- Separate slipover base •
- Textured "Cast Iron" finish •
- Non-conductive •
- Non-corrosive •
- Lightweight •



Specifications

- Mounting heights: 6' - 16'
- Standard colors: black, bronze, green (color matching available)
- Post top OD: 4.5"
- Decorative base: height – 18.5"; diameter – 17"
- Handhole: 2 1/2" x 5"
- Tenon: 3" x 3" aluminum (Opt. 2 3/8" x 3")
- Wire Hole: 1 3/8" direct burial; 5" anchor base
- 5 EPA at 100 MPH with a 1.3 gust factor





SCREW-IN
RETROFITS



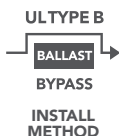
FLEXCOLOR SHOE BOX / WALL PACK



← flexCOLOR
switch
between
color
temps

← rotatable
base

- 30W, 50W, 80W, and 110W models replacing up to 400W HID.
- Switch between 3000K, 4000K, & 5000K right on the unit.
- Light panel can rotate once the base is tightened to direct light out of the fixture.
- Includes a fan and thermal sensor to run cool and ensure a long and bright life.
- Enclosed fixture safe and approved for damp locations.
- LED-8090-HV: 277-480V.
(can be used on 347V)
- "D" Models dim to 50% by selecting "LO" on the switch located on the top of the lamp only.



PART #	UPC	REPLACES	WATTAGE	LUMENS	COLOR	BASE	DLC CODES
LED-8087E345D-G4	844006074432	100W HID	30W	3500/4200/4300	3000K/4000K/5000K	E26	N/A
LED-8087M345D-G4	844006074456	100W HID	30W	3500/4200/4300	3000K/4000K/5000K	EX39	P1CK54P3
LED-8088E345D-G4	844006074470	175W HID	50W	6400/6900/7200	3000K/4000K/5000K	E26	N/A
LED-8088M345D-G4	844006074494	175W HID	50W	6400/6900/7200	3000K/4000K/5000K	EX39	P6YHOJXP
LED-8089M345D-G4	844006074517	250W HID	80W	10600/10700/10800	3000K/4000K/5000K	EX39	PE1R64EU
LED-8090M345D-G4	844006074524	400W HID	110W	14500/15400/15700	3000K/4000K/5000K	EX39	PTGQIRSF
LED-8090M345D-G4-HV	844006074760	400W HID	110W	14500/15400/15700	3000K/4000K/5000K	EX39	PLOZ2S2U

* See page 2 for product dimensions

* See page 2 for 347 volt options for Canada.



* "D" Models available in Fall 2022





FLEXCOLOR SHOE BOX/WALL PACK

🇨🇦 347 VOLT OPTIONS FOR CANADA 🇨🇦

PART #	UPC	REPLACES	WATTAGE	LUMENS	COLOR	BASE	DLC CODES
LED-8087E345CD-G4	844006074425	100W HID	30W	3500/4200/4300	3000K/4000K/5000K	E26	N/A
LED-8087M345CD-G4	844006074449	100W HID	30W	3500/4200/4300	3000K/4000K/5000K	EX39	PNARUA94
LED-8088E345CD-G4	844006074463	175W HID	50W	6400/6900/7200	3000K/4000K/5000K	E26	N/A
LED-8088M345CD-G4	844006074487	175W HID	50W	6400/6900/7200	3000K/4000K/5000K	EX39	PLK1XZP2
LED-8089M345CD-G4	844006074500	250W HID	80W	10600/10700/10800	3000K/4000K/5000K	EX39	PF34RTPP

PRODUCT DIMENSIONS

PART #	DIMENSIONS (LxW)
LED-8087E345D-G4	6.4 X 3.0 in.
LED-8087M345D-G4	6.9 X 3.0 in.
LED-8088E345D-G4	7.9 X 3.75 in.
LED-8088M345D-G4	8.5 X 3.75 in.
LED-8089M345D-G4	10.0 X 4.3 in.
LED-8090M345D-G4	11.4 X 4.3 in.
LED-8090M345D-G4-HV	11.4 X 4.3 in.
LED-8087E345CD-G4	6.4 X 3.0 in.
LED-8087M345CD-G4	6.9 X 3.0 in.
LED-8088E345CD-G4	7.9 X 3.75 in.
LED-8088M345CD-G4	8.5 X 3.75 in.
LED-8089M345CD-G4	10.0 X 4.3 in.